



Staffordshire
Wildlife Trust

School Programmes

An exciting range of school programmes,
school grounds improvements, and
Forest School suitable for Foundation
Stage & Key Stages 1-5.



Welcome



Staffordshire Wildlife Trust offers a range of programmes and activities to get schools outside and engaged with the environment.

Explore

With guidance from our skilled Learning Team, children will experience hands-on education in both an exciting and safe environment.

Discover

Whether pond dipping in the spring, hunting for butterflies in the summer, looking for colours in autumn or making campfires in the winter, children will be having fun while learning.

Engage

Make the most of your outdoor areas at school with our range of on-site activities and training.

Locations

Education centre

Our headquarters at The Wolseley Centre, near Rugeley features a purpose built, environmentally friendly Learning Hub which is the perfect base for schools when coming on a trip to explore our grounds. The Learning Hub is highly accessible for all and has many features built with schools' needs in mind including toileting facilities, storage areas and outdoor sinks for handwashing. We also have a fully accessible Tipi available for school visits, to accommodate larger groups and extra visits during our busy season.

At your school

We can come to your school and deliver most of our exciting programmes as outreach.

Forest School

Our Forest School sessions can be delivered at your school or at one of our nature reserves.

Nature reserves

We can deliver many of our programmes at our nature reserves across the county.

Wild Wellbeing

We can provide a range of wellbeing activities and programmes to help promote positive wellbeing and mental health to school children. Promoting good mental health and wellbeing is becoming absolutely vital for children to progress through school and be able to face challenges in their lives. By offering targeted wellbeing activities outdoors we are aiming to help children develop a toolkit of ways to improve their wellbeing. Look out for our Wild Wellbeing logo for these programmes.



Environmental Education Programmes



Education centre

Bring your school to Staffordshire Wildlife Trust's outstanding Education centre.

What we provide

- Fully equipped and accessible classrooms
- Toilet and hand washing facilities
- Coach parking
- Safe, secure learning environments
- A range of exciting habitats
- Curriculum linked programmes available all year round
- Wheelchair access to some areas on site
- Experienced and DBS-checked staff
- Risk assessments for all activities

Duration and charges for school visits

Most of our programmes are half a day in length. The programmes are designed to complement each other, making a full day trip a really engaging experience for your students. Please note all of our KS3-KS5 programmes are a full day.

EYFS – KS2, £10.00 per child – full day (min charge £200 off-peak, £250 peak*)

EYFS – KS2, £8.00 per child – half day (min charge £120)

KS3 – KS5, £14.00 per child – full day (min charge £280)

***Peak season May, June and July**

Adults can attend for free within our suggested ratio numbers. Additional adults are charged £3 each.

At your school

Staffordshire Wildlife Trust offers a variety of exciting programmes and assemblies that we can deliver in your school.

Assemblies

We have an exciting package of nature based assemblies to suit all seasons. Assemblies can be delivered to children aged 3-11 and aim to increase their knowledge of common British flora and fauna, give ideas on fun ways to explore nature, and to instil in them an interest and respect for wildlife.

We have a range of assembly topics, from the four seasons and wildlife highlights of the year to mammals, wildflowers and wild wellbeing which consists of how nature can improve mental and physical health. The interactive and engaging assemblies are based around a PowerPoint presentation. We will bring our own laptop and simply need connection to an interactive whiteboard or visualiser.

Outreach

We can come to your school to deliver our engaging educational programmes. Dependent on school grounds, we can offer nearly all of our "trips" on your doorstep! We can also adapt our programmes to suit the needs of the group or to fit in with your outdoor space.

All of the programmes we deliver have been

developed

around the national curriculum and are interactive, engaging and hands-on, giving children fantastic opportunities to learn outside of the classroom and connect with nature. We can deliver these

programmes

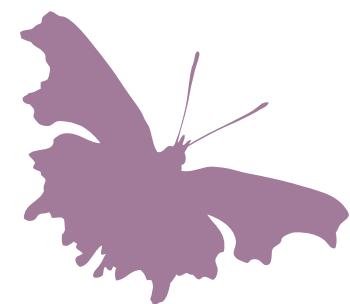
year round and bring all of our equipment with us.

£250 for half day (2 hours)

£500 for full day (4 hours)

based on a group of 30 children, additional fee applies for larger groups

Primary Education Programmes



The programmes listed below are grouped into suggested key stages, however programmes can be adjusted to suit your year group.

Early Years programmes

Brilliant birds

Look closely at bird life cycles, explore variations between birds on a bird hike, explore the survival requirements of birds, and discover the difficulties having a beak can bring!

Terrific trees

Explore the world of plants using all of the senses. Learn about different forms of plant life, parts of plants and the life cycle, as well as doing some fun woodland crafts.

Fantastic frogs*

Learn all about the world of water, the frog life cycle, and discover what other creatures live in the pond while going pond dipping.

Beautiful butterflies*

Through stories, games and outdoor exploration discover the life cycle of the butterfly, the importance of caterpillar camouflage and what other minibeasts live in nature.

Rain Garden Ramblers

Exploration using all the senses in our Rain Garden. Try to fill up the pond with the water pump and channelling systems, enjoy scavenger hunts and investigating a variety of natural materials. This programme is perfect for early year explorers to enjoy time choosing their own way to delve into the natural environment. (This programme would be ideal as an afternoon programme after a morning of formative learning).



Early Years, KS1, & KS2

Earthwalks

Use all of the senses to explore nature through a variety of interactive activities. Gain appreciation for the outdoors, understand more about our senses, and develop descriptive language.

Naturally art

Discover a variety of natural materials and tools to make wonderful natural art. Become more visually aware of the natural environment and discover textures, shapes, colours and patterns.

Seasons

Discover how the environment changes throughout the year and take part in seasonal activities. Explore colour changes, do natural crafts, build homes for animals in autumn/winter and sow seeds in spring.

Wild Yoga



Yoga benefits children mentally, emotionally and physically. Develop yoga poses through the use of stories, games and songs and learn mindfulness, meditation and breathing techniques. Sessions last for one hour, to a maximum of 24 children. Reception classes will be delivered in 2 groups, 30 minutes each



KS1 & KS2

Everybody needs a rock



Through interactive activities, develop an understanding of mental health and wellbeing. Discover mindfulness and the benefits of being outside in nature.

Nature's stories

Explore stories and poems outside in the woodland. We will then generate wonderful ideas, exciting vocabulary, and character and setting details for an original nature story to write back at school.

Discovering minibeasts

Learn about different habitats and discover the diversity of minibeasts that live in them using a variety of capture techniques. Choose a topic to focus on: habitats, classification, food chains, life cycles or adaptation.

Watery wildlife*

Learn about freshwater habitats, pond dip to discover the diversity of creatures living in water, record data and learn how to classify. Choose a topic to focus on: habitats, classification, food chains, life cycles or adaptation.

Plantastic

Learn about the structure and function of plants, what plants require for growth, the importance of seeds and dispersal, and explore different habitats to identify trees, plants and flowers.



Ks2

Stone Age

In this full day programme, experience what it might have been like to live in the Stone Age and master new skills! Activities include making crockery, building shelters, tool making, fire lighting and following tracks and trails.

Nature's table

Learn about the concept of food chains and energy flow, explore the outdoors for signs of food chains in the natural environment and go on a bug hunt to discover who eats who!

River studies

Take part in an action packed full day to deepen understanding of river processes and terminology. Study the physical geography of the River Trent through hands-on fieldwork and compare it to another freshwater habitat.

* Available at select sites and subject to time of year



Secondary Education Programmes



Staffordshire Wildlife Trust offers a number of KS3 - KS5 courses covering the geography and science curriculum. These courses will help students to gain the necessary fieldwork skills, such as formulating hypotheses, establishing methodology and analysing data.

The Wolseley Centre, near Rugeley

Climate Studies

Students will investigate the science behind climate and human impact through interactive games, hands-on fieldwork, and guided discussions. They will take part in activities that bring complex processes to life. They will compare weather and climate, examine the greenhouse effect, and consider how climate change might impact people and locations differently, encouraging critical thinking about their environmental influence.

Human Geography at The Wolseley Centre

This programme studies the interactions between people and the environment. It looks at changes in places over time, focusing on changes at The Wolseley Centre. They will use fieldwork skills in contrasting locations to collect, analyse and draw conclusions from data, using multiple sources of information.



Geology Rocks!

Students will identify minerals using physical properties. Model the rock cycle to discover how different rocks form. Simulate tectonic plate movement to understand the processes that shape our planet, and explore the role of erosion and human land use in changing landscapes. This programme makes connections between Earth's internal processes and life on the surface, linking geology with climate, natural resources and human activities.

Ecosystems - Birds or Invertebrates

This biology based programme looks at relationships within ecosystems, with this version of the programme using birds, or invertebrates, as the focus.

Students will learn about

- The interdependence of organisms in an ecosystem
- How organisms affect, and are affected by, their environment
- Effective species identification and how a species is specifically suited to its environment.

They will use fieldwork skills in contrasting locations to collect, analyse and draw conclusions from data, using multiple sources of information.



Our Wolseley Facilities

Our Learning Hub is spacious and well equipped, with separate toilets for adults and children and an accessible toilet for people with additional needs. It is a great base for eating lunch and gathering together.



Cotton Dell Nature Reserve, Oakamoor

River Studies (Physical Geography)

Investigate the river's changing channel characteristics along its course. Students will devise a question and hypothesis to test Bradshaw's Model. They will then collect quantitative and qualitative data on channel width, depth, cross sectional area, wetted perimeter, and velocity. They will complete their fieldwork at three study sites from upstream to downstream.



Teacher Training Opportunities

We can also offer teacher training in various aspects of outdoor learning. Training can take place in a twilight session or as an Inset day. Sessions will be hands on, exciting and informative.

Schools will be able to choose from a menu of options, ranging from practical skills such as how to safely deliver a campfire with pupils, to how to incorporate Maths and English meaningfully in an outdoor setting.

For more information and to discuss choices, please contact: getwild@staffs-wildlife.org.uk.



Extra Curricular

After School and Lunchtime Clubs

Encourage children to discover their wild-side and an enjoyment of being outdoors. Each club will have a theme and an emphasis on free play allowing them to decide what activities they want to do and when!

Choose from:

Wild Child Club – choosing wild art to wild survival activities.

Forest Club – teaching bushcraft skills such as fire lighting and whittling

Wild Yoga Club – learn yoga in the outdoors along with Wildplay

All club sessions last an hour and can take place after school or during lunchtime delivered by experienced and qualified staff to a maximum 20 children (all ages) per club. One school staff member must assist with the club and is responsible for behaviour management.

£120 for 1 session
£700 for 6 sessions
£1300 for 12 sessions

Extra Curricular Days

Made up of various workshops that schools can choose from. We can work with one class for the whole day or multiple classes throughout the day.

Activities can include:

Forest School Celebrations, Wild Wellbeing Day or Bespoke Celebration Days.



Transforming your school grounds

Staffordshire Wildlife Trust can help you to transform your school grounds into an exciting and immersive outdoor learning environment.

Whether you are looking to make your school grounds more wildlife friendly, create an outdoor classroom, build a sensory garden or make a Forest School area, we can provide the help and expertise to make this a reality.

£250 – Onsite consultation: site visit – includes written report

Get in touch if you'd like further information
getwild@staffs-wildlife.org.uk



Forest School

Forest School is a unique educational experience that complements and enhances learning, aiming to raise confidence and self-esteem outside of the classroom.

Our qualified Forest School leaders offer an ongoing, rewarding and safe learning experience, connecting participants with nature through a programme of achievable tasks and free exploration.

Sessions are attended over a minimum of half a term and group sizes are kept to a maximum of 15 participants. This ensures each young person gets the support they need to achieve personalised participant led outcomes.

Staff work with children on an individual, small group or whole group level. This provides a nurturing environment where participants can learn at their own pace and explore their own interests; as a result, their skills and confidence accumulate over time.

During sessions, participants could be building shelters, practising safe fire lighting, using tools to create a wooden name badge, outdoor cooking, or tuning in to the sights and sounds around them. Activities can also be curriculum linked to most subjects.

Participants benefit in many ways from Forest School including improved behaviour, increased communication skills, a positive relationship to learning, increased self-esteem and better motor skills.

Appropriate risk taking with support from the Forest School Leader is part of the Forest School ethos and experience recognising risk benefits. All activities, tools and sites are thoroughly risk assessed, although leaders encourage safe risk taking.

Six sessions, each session up to two hours – £1500 at any location

12 sessions, £2500

1 year of delivery, £7750
(minimum of 6 sessions required)

Please contact us for updated prices and more information on Forest School for your students or staff training: getwild@staffs-wildlife.org.uk 01889 880100 www.staffs-wildlife.org.uk



Forest School staff training

Train to become a Level 3 Forest School leaders, accredited by AIM Qualifications and Assessment Group, so you can provide this amazing experience in your own setting.

You will gain the skills, practical knowledge and confidence it takes to deliver recognised Forest School and you will be supported and mentored throughout the training process and in producing your portfolio.

Course dates:

We run Level 3 courses in spring and autumn every year and also run taster days for those wanting to find out more about Forest School. For specific course dates, please search for Forest School on the 'What's on' page of our website.

Cost:

Spring 2026 – £1149