



**Staffordshire  
Wildlife Trust**

# Environmental Education Programmes

An exciting range of school programmes,  
school grounds improvements, and Forest  
School suitable for Foundation Stage &  
Key Stages 1-5.





# Welcome

Staffordshire Wildlife Trust offers a range of programmes and activities to get schools outside and engaged with the environment.

## Explore

With guidance from our skilled Learning Team, children will experience hands-on education in both an exciting and safe environment.

## Discover

Whether pond dipping in the spring, hunting for butterflies in the summer, looking for colours in autumn or making camp fires in the winter, children will be having fun while learning.

## Engage

Make the most of your outdoor areas at school with our range of on-site activities and training.

## Locations

### Education centres

Our headquarters at The Wolseley Centre, near Rugeley features a purpose built, environmentally friendly Learning Hub which is the perfect base for schools when coming on a trip to explore our grounds. The Learning Hub is highly accessible for all and has many features built with schools' needs in mind including toileting facilities, storage areas and outdoor sinks for handwashing.

We also have education centres in North and South Staffordshire. Please contact us for more information on the location and facilities at these centres.

### At your school

We can come to your school and deliver most of our exciting programmes as outreach.

### Forest School

Our Forest School sessions can be delivered at one of our education centres, our nature reserves, or at your school.

### Nature reserves

We can deliver many of our programmes at our nature reserves across the county.



## Education centres

Bring your school to one of Staffordshire Wildlife Trust's outstanding education centres.

### What we provide

- Fully equipped and accessible classrooms
- Toilet and hand washing facilities
- Coach parking
- Safe, secure learning environments
- A range of exciting habitats
- Curriculum linked programmes available all year round
- Wheelchair access to some areas on site
- Experienced and DBS-checked staff
- Risk assessments for all activities
- Incorporation of the Five Ways to Wellbeing for all KS1 – KS2 programmes

### Duration and charges for school visits

Most of our programmes are half a day in length. The programmes are designed to complement each other, making a full day trip a really engaging experience for your students. Please note all of our KS3-KS5 programmes are a full day.

**EYFS – KS2, £7.50 per child – full day** (min charge £75)

**EYFS – KS2, £5.00 per child – half day** (min charge £50)

**KS3 – KS5, £10.00 per child – full day** (min charge £120)

Adults can attend for free within our suggested ratio numbers (please refer to our useful information sheet when booking). Additional adults are charged £3 each.

## At your school

Staffordshire Wildlife Trust offers a variety of exciting programmes and assemblies that we can deliver in your school.

### Assemblies

We have an exciting package of nature based assemblies to suit all seasons. Assemblies can be delivered to children aged 3-11 and aim to increase their knowledge of common British flora and fauna, give ideas on fun ways to explore nature, and to instil in them an interest and respect for wildlife.

We have 12 assembly topics, from the four seasons and wildlife highlights of the year to mammals and wildflowers. The interactive and engaging assemblies are based around a PowerPoint presentation. We will bring our own laptop and simply need connection to an interactive whiteboard or visualiser.

### Charges

We can deliver individual assemblies or a half terms' worth of weekly assemblies. Prices are:

**£30 – individual assembly**

**£150 – block of 6 assemblies**

### Outreach

We can come to your school to deliver our engaging educational programmes. Dependent on school grounds, we can offer nearly all of our "trips" on your doorstep! We can also adapt our programmes to suit the needs of the group or to fit in with your outdoor space.

All of the programmes we deliver have been developed around the national curriculum and are interactive, engaging and hands-on, giving children fantastic opportunities to learn outside of the classroom and connect with nature. We can deliver these programmes year round and bring all of our equipment with us.

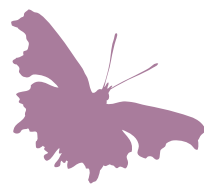
### Charges

All of our outreach programmes are half a day in length. We can deliver two programmes in one day, or deliver to two separate classes. Prices are:

**£250 – full day**

**£175 – half day**





# Primary Education Programmes

The programmes listed below are grouped into suggested key stages, however programmes can be adjusted to suit your year group.

## Early Years programmes

### Brilliant birds

Look closely at bird life cycles, explore variations between birds on a bird hike, explore the survival requirements of birds, and discover the difficulties having a beak can bring!

### Terrific trees

Explore the world of plants using all of the senses. Learn about different forms of plant life, parts of plants and the life cycle, as well as doing some fun woodland crafts.

### Fantastic frogs\*

Learn all about the world of water, the frog life cycle, and discover what other creatures live in the pond while going pond dipping.

### Beautiful butterflies

Through stories, games and outdoor exploration discover the life cycle of the butterfly, the importance of caterpillar camouflage and what other minibeasts live in nature.



## Early Years, KS1, & KS2

### Earthwalks – senses

Use all of the senses to explore nature through a variety of interactive activities. Gain appreciation for the outdoors, understand more about our senses, and develop descriptive language.

### Numbers in nature

An interactive programme using natural resources in the woodland, *Numbers in nature* will assist with learning and put maths skills to the test!

### Naturally art

Discover a variety of natural materials and tools to make wonderful natural art. Become more visually aware of the natural environment and discover textures, shapes, colours and patterns.

### Seasons

Discover how the environment changes throughout the year and take part in seasonal activities. Explore colour changes, do natural crafts, build homes for animals in autumn/winter and sow seeds in spring.



Paul Harris, 2020VISION

## KS1 & KS2

### Everybody needs a rock

Through interactive activities, develop an understanding of mental health and wellbeing, discover mindfulness and the benefits of being outside in nature.

### Nature's stories

Explore stories and poems outside in the woodland. We will then generate wonderful ideas, exciting vocabulary, and character and setting details for an original nature story to write back at school.

### Discovering minibeasts

Learn about different habitats and discover the diversity of minibeasts that live in them using a variety of capture techniques. Choose a topic to focus on: habitats, classification, food chains, life cycles or adaptation.

### Watery wildlife\*

Learn about freshwater habitats, pond dip to discover the diversity of creatures living in water, record data and learn how to classify. Choose a topic to focus on: habitats, classification, food chains, life cycles or adaptation.

### Plantastic

Learn about the structure and function of plants, what plants require for growth, the importance of seeds and dispersal, and explore different habitats to identify trees, plants and flowers.



## Ks2

### Stone Age

In this full day programme, experience what it might have been like to live in the Stone Age and master new skills! Activities include making crockery, building shelters, tool making, fire lighting and following tracks and trails.

### Nature's table

Learn about the concept of food chains and energy flow, explore the outdoors for signs of food chains in the natural environment and go on a bug hunt to discover who eats who!

### River studies\*

Take part in an action packed full day to deepen understanding of river processes and terminology. Study the physical geography of the River Trent through hands-on fieldwork and compare it to another freshwater habitat.

\* Available at select sites and subject to time of year





# Secondary Education Programmes



Our KS3-KS5 programmes have been created purposefully for the new secondary curriculum that is being taught at GCSE and A-level.

These programmes allow students to investigate a scientific enquiry using a comprehensive scientific framework that reflects the new fieldwork assessment component. The students will work together to formulate hypotheses, plan and justify methods, use fieldwork techniques to collect data, analyse data and evaluate their study.

The programmes allow the students to:

- develop their practical skills
- prepare for the fieldwork exam
- complete science practical endorsements
- conduct an independent investigation



## Physical Geography (River studies)

### Cotton Dell nature reserve, Oakamoor

Investigate the river's changing channel characteristics along its course. Students will devise a question and hypothesis to test Bradshaw's Model. They will then collect quantitative and qualitative data on channel width, depth, cross sectional area, wetted perimeter, and velocity. They will complete their fieldwork at three study sites from upstream to downstream.

## Human Geography (Rebranding)

### The Wolseley Centre, near Rugeley

Investigate the changes in land use of The Wolseley Centre, while considering the economic and environmental impacts associated with land use change. Hands-on activities include categorising land use changes, Venn Diagram investigations, environmental quality survey, and bi-polar analysis.

## Biology (Succession)

### Brankley Pastures nature reserve, Barton-under-Needwood

Investigate the distribution and abundance of vegetation within a named ecosystem and the process of succession. Activities include collecting quantitative and qualitative data on the heights of the vegetation, abundance of species and species richness within each quadrat along a systematic transect.



# Transforming your school grounds



Staffordshire Wildlife Trust can help you to transform your school grounds into an exciting and immersive outdoor learning environment.

Whether you are looking to make your school grounds more wildlife friendly, create an outdoor classroom, build a sensory garden or make a Forest School area, we can provide the help and expertise to make this a reality.

Get in touch if you'd like further information.

## Sow the seeds: consultation visit - £75

A member of staff will visit your school and we will be able to offer advice, take measurements if needed, and listen to your ideas. If you choose to book any further work with us, we will refund the cost of this consultation. At this visit you will be given a free resource pack, listing funding options and resources to make your school grounds dream become a reality.

## Start growing!

Every school will have different visions for their school grounds. We have put together a wide range of options to cater for all needs, from small wildlife friendly activities, to larger transformative projects. As each school is different, the amount of resources and staff time will vary between projects.

**As a guide, a day of our staff time at your school will cost £300**, which includes planning time and hand tools. Other tool hire and cost of materials will be extra, and can be discussed at your consultation. The final cost will be fully inclusive of everything you require.



## Project options

Minibest hotel	Tree/hedgerow planting
Mud kitchen	Wildflower meadow
Permanent fire pits	Raised beds
Raised ponds	Posts for hammocks
Ponds	Hedgehog house
Semi-permanent shelters	

You can mix and match as many of the options as you like and we will factor in working with classes of students on the projects where possible. Please contact us if you have other ideas for projects.

## Harvest your crop

Once your projects have been completed we can offer the following to help you utilise your new facilities:

**INSET training for teachers** in ways to utilise the great outdoors in your teaching!  
**£175 for a half day or £250 for a full day.**

**Outreach session for students** using your new and improved school grounds!  
**£175 for a half day, or £250 for a full day.**

**Starter kit for outdoor learning:** one portable fire pit, one hammock, one set of 5 stumps, one set of 30 wood cookies, one set of 5 fire steels, one set of 10 different sized logs and poles for den building.  
**£300 including delivery.**



# Forest School

Forest School is a unique educational process that complements and enhances learning, aiming to raise self-awareness and self-esteem outside of the classroom.

Our qualified Forest School staff offer an ongoing, rewarding and safe learning experience, connecting children and nature through a programme of achievable tasks and free exploration.

Sessions are attended over a minimum of half a term, and group sizes are kept to a maximum of 15 participants. This ensures each young person gets the support they need to achieve personalised outcomes.

Staff work with children on an individual, small group or whole group level. This provides a nurturing environment where participants can learn at their own pace; as a result their skills and confidence accumulate over time.

During sessions, participants could be building shelters, practising safe fire lighting, using tools to create a wooden name badge, outdoor cooking, or tuning in to the sights and sounds around them. Activities can also be curriculum linked to most subjects.

Participants benefit in many ways from Forest School including improved behaviour, increased communication skills, a positive relationship to learning, increased self-esteem and better motor skills.

All activities are thoroughly risk assessed, although staff encourage safe risk taking.



## Forest School staff training

Train to become Level 3 Forest School leaders, accredited by Open College Network, so you can provide this amazing experience in your own setting. You will gain the skills, practical knowledge, and confidence it takes to deliver Forest School and you will be supported and mentored throughout the training process and in producing your portfolio.

**Course dates:** We run Level 3 courses in spring and autumn and also run taster days for those wanting to find out more about the course. For specific course dates, please search for Forest School on the 'What's on' page of our website.

**Cost: £975 per person** which includes everything you need for your training including the Open College Network assessment fees, ongoing tutor support and a specific Forest School First Aid Qualification.



Please contact us for more information on Forest School for your students or staff training:  
[getwild@staffs-wildlife.org.uk](mailto:getwild@staffs-wildlife.org.uk) 01889 880100 [www.staffs-wildlife.org.uk](http://www.staffs-wildlife.org.uk)